



Pictures 51

All media

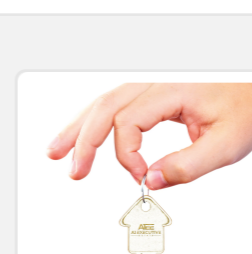
## Old Valkenburg 7

6305 AA Schin on GeulOud -Valkenburg

**€3,955,000 k.k.** [What will be my monthly expenses?](#)

 750 m<sup>2</sup> Living 15,525 m<sup>2</sup> Plot 16 Bedrooms


Card



### A1 Executive Estate

Show phone number

Get in touch

Request viewing

Report an error about this house

funda



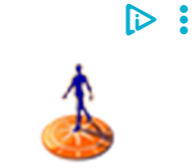
#### Are you familiar with X<sup>2</sup>O Bathrooms?

- Not familiar with
- Known, but not interested
- A brand I would consider
- My favorite bathroom specialist
- Planning to buy an X<sup>2</sup>O bathroom

### Description

The monumental castle Schaloen is an estate with moats about 1,000 years old, with a rich history, a gatehouse with visitor center with doorman's house, a restaurant, 16 apartments and a hotel with extended rooms and possibly event rooms. The river Geul runs around the estate and the moats and the surroundings are particularly inspiring. The lovely hilly landscape is located in a protected nature reserve and the views are spectacular. Via the driveway, domed by linden trees, we reach the castle. We take the bridge over the moat and renovated quay walls and we reach the gatehouse. A lock has been built in the water, so that dirty water cannot flow into the castle moats at high tide. The doors welcome us and open to the visitor center with cafe, the apartments, the castle and the hotel. Through the restored hardstone landing stairs, we enter the hall of the castle. The heavy double oak doors give access to the reception room, with beautiful high ceilings with ornaments and cornices. The walls are provided with a special paneling. At the rear is a natural stone balcony with special forging craft in the fence. The white marble fireplace has been perfectly restored. Through the right passage in the reception room, one enters the former Church Hall. This is currently in use as a bedroom, but the – probably 800-year-old – painted doors that lead to the old altar, one can recognize the church destination. If we walk back and take the other doors through the reception room, we get to the old library. The restoration method allows one to give this room a different destination without any problems. The ceilings leave nothing to the imagination. When we take the double doors to the next room, we arrive in "the Ridderzaal". This is now in use as a living room with a beautiful oak floor and a monumental fireplace. This fireplace has the coat of arms of the family and the year of restoration in gold leaf. The large windows in the castle provide plenty of light. The radiators are tastefully hidden. The window and door handles are still original. In the reception center in the basement of the castle, you will find many special details. There is also a lounge with bar and a large natural stone fireplace. The beautiful frescoes receive a lot of attention from the guests. Through the old vaults we enter the restaurant, which has a beautiful bronze plaque with the coat of arms and the restoration year 1575. The frescoes, along with the old niches with few candles, are very worthwhile. In the hall you will also find a fresco with the old map from hundreds of years ago, with the name: Sloen. That was the name of the estate then. The restaurant is served from a brand new "state-of-the-art" kitchen, to prepare top dishes. On the floor above we find the servants' rooms. These rooms have not yet been fully restored, but all electricity, water pipes and heating points have been prepared. The rooms are 5 meters high and are approximately between 65 and 85 m<sup>2</sup> each. Furthermore, there is a complete extra closed staircase that runs through the castle. This concerns the stair system used by the employees and to prevent the staff from being encountered. The upper 2 floors are large in size and suitable for all kinds of different purposes. On these floors, the tower rooms have been deliberately left in the old state. But on the ground floors they are fully in use according to current norms and standards. The estate has been restored over the past 500 years and has been completely completed by the current owner. The entire plot is 75 meters above sea level and is 22,000 M<sup>2</sup> in size. The hotel rooms have a lot of privacy, borders to one of the gardens and the old original details have been preserved. The castle with the reception room and the restaurant has 1220 M<sup>2</sup>; the gatehouse with house, visitor center and café is 525 M<sup>2</sup>; the 16 apartments have 1584 M<sup>2</sup> and the hotel with the halls is 825 M<sup>2</sup>. Castle Schaloen; this unique object is for sale as a castle alone (€ 3.995,000.00) and/or together with the outbuildings (€ 2.650,000.00) and if you would like more information please contact us: +31 20 4410088. This information has been compiled by us with the necessary care. However, on our part, no liability is accepted for any incompleteness, inaccuracy or otherwise, or the consequences thereof.

What is your premium?

Quickly calculated for your home. [Check here](#)

### Characteristics

Transfer	
Asking price	€ 3,955,000 costs buyer <a href="#">Mortgage advice</a>
Asking price per m <sup>2</sup>	€5,273
Offered since	6+ months
Status	Available
Acceptance	In consultation
Rabobank	Safe living, without worries? <a href="#">Watch now</a>

Construction	
Type of house	Country house, detached house
Type of construction	Existing construction
Year of construction	1656
Specific	Heritage and monumental building

Surfaces and content	
Usable surfaces	
Living	750 m <sup>2</sup>
Plot	15,525 m <sup>2</sup>
Content	6,100 m <sup>3</sup>

Classification	
Number of rooms	16 rooms (16 bedrooms)
Number of residential floors	1 living layer
Facilities	Natural ventilation

Energy	
Energy label	Not available
Heating	Heating boiler

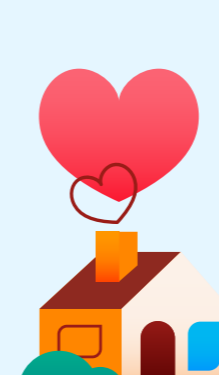
  

Cadastral data	
OUD-VALKENBURG A 1185 <a href="#">Cadastral map</a>	
Surface	10,000 m <sup>2</sup>
Ownership situation	Full ownership
OLD-VALKENBURG A 1381 <a href="#">Cadastral map</a>	
Surface	5,525 m <sup>2</sup>
Ownership situation	Full ownership

[View all features](#)

#### Want to know immediately if something changes?

Save this house as a favorite, and receive an email if the price or status changes.



### Popularity

62,142x Viewed	316x Saved	24-4-2023 On Funda
----------------	------------	--------------------

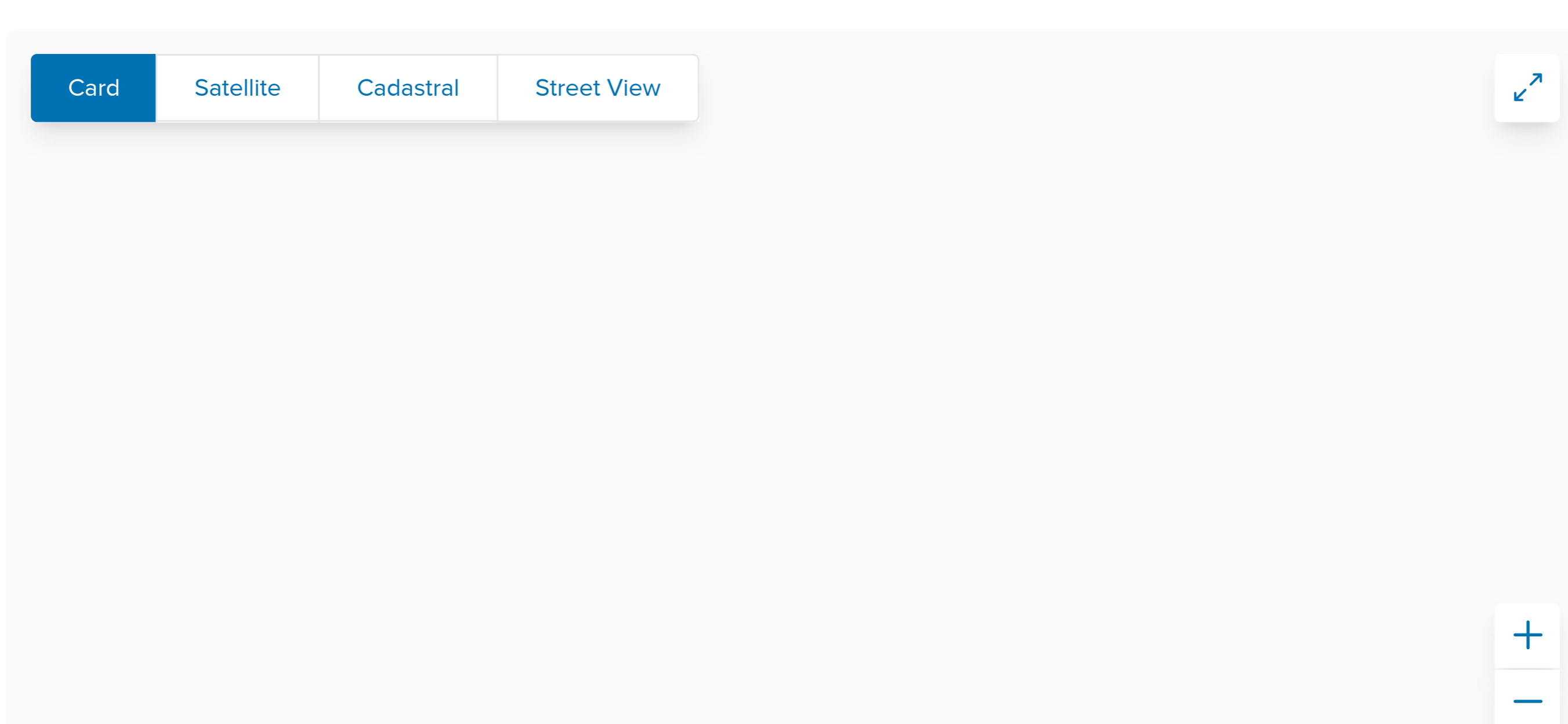
### Neighborhood

Old Valkenburg Schin on Geul	
Residents	105
Family with children	17 percent

#### Neighborhood insights

Explore the neighborhood

Curious about the housing offer, residents or real estate agents? Find out on the neighborhood page.

[More about the neighborhood](#) →


Calculate travel time on Google Maps

### Answer all your important questions

#### Further deepen

Share Print page I am selling this house

#### Quickly to

[Sell your home on Funda](#)
[Check your home value](#)
[Find a NVM broker](#)
[Follow the housing market: Funda Index](#)
[Question & answer](#)

#### Insights & inspiration

[Login My Home](#)
[Everything about buying a house](#)
[Selling everything about a house](#)
[Tackling everything about your house](#)
[Tips for searching on Funda](#)
[New features on Funda](#)

#### For brokers

[Sign up for Funda](#)
[Post and promote objects](#)
[Promote your office](#)
[Expand your knowledge](#)
[Login Funda desk](#)

#### More Funda

[About Funda](#)
[Working at Funda](#)
[For advertisers](#)
[Editorial policy](#)
[contact](#)